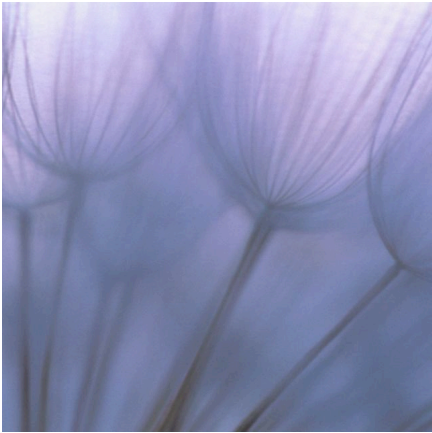


whitedesign



SNACC
Stakeholder Perspective



Who is involved in SNACC?

Principal Investigators

Co-Investigators

Researchers

Stakeholder partners

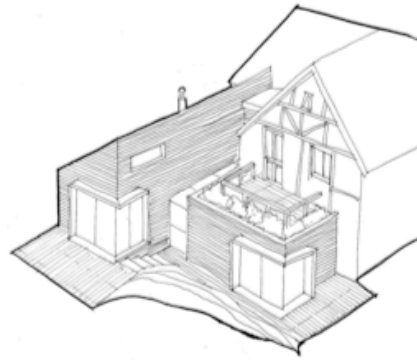
- Bristol City Council
- Oxford City Council
- Stockport Borough Council
- White Design

Consultants

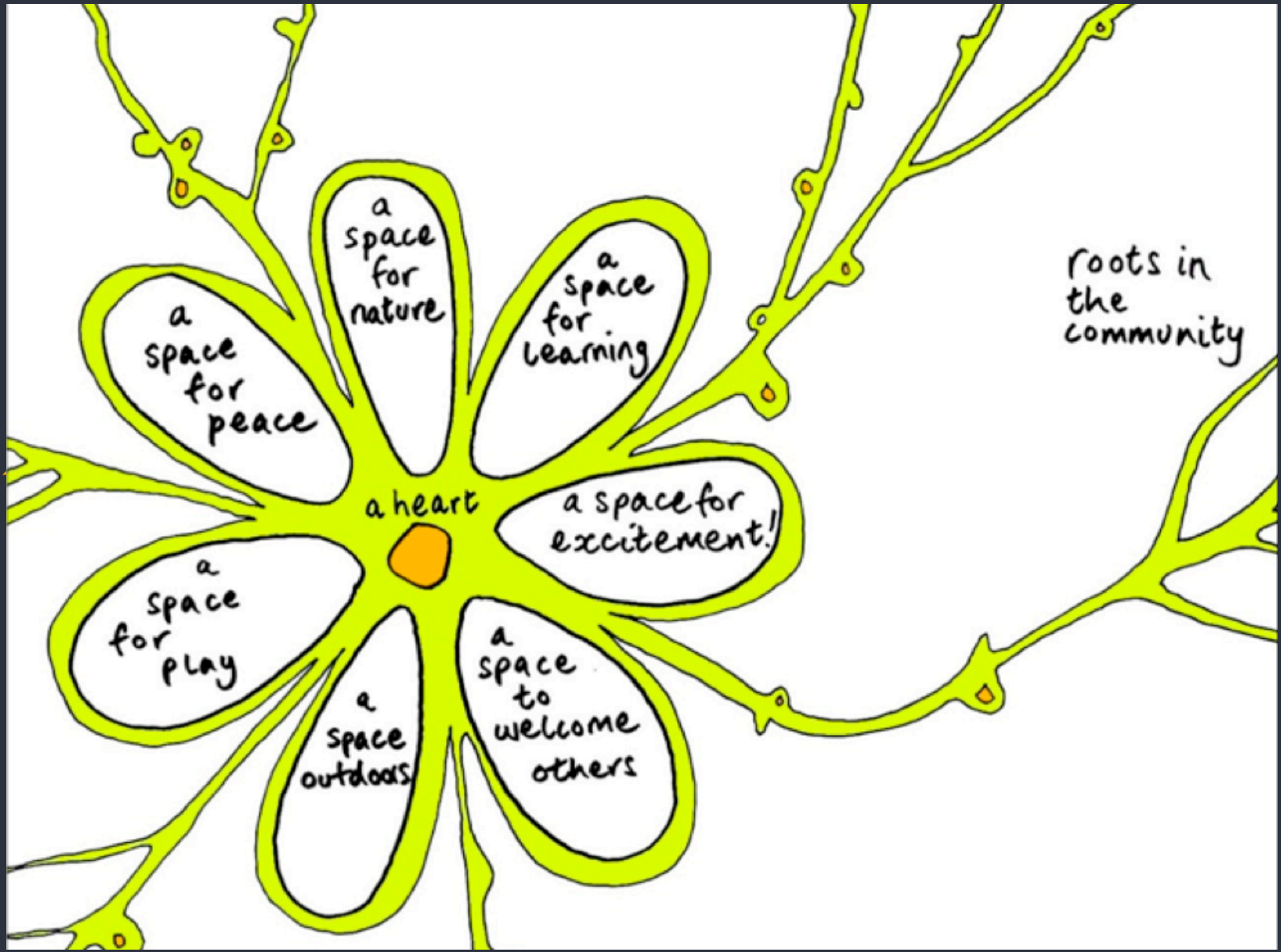
International visiting researchers from Sweden, Australia, Portugal and USA

whitedesign

whitedesign



sustainable places at a range of scales



translation: brief development & consultation



packaging up solutions

How do we package up adaptation and mitigation measures appropriately for different housing typologies?

How do communities and individuals make decisions about what is necessary, desirable and affordable?

What information and communication tools are needed?

How do we as practitioners make use of the research outputs in consultation with other user groups affected by climate change?

How do we share learning between projects addressing different scales of intervention? e.g. individual properties (TSB Retrofit)

research into practice questions (SNACCC)

What are the best mechanisms to implement neighbourhood scale retrofit (public, private and community actors)?

What role can awareness and incentives play in encouraging take-up in a range of contexts?

What behavioural changes are needed to realise the full benefits of different measures?

What cultural changes are needed to support adaptation strategies?

What adaptation skills, knowledge and behaviours do we need to be encouraging in future generations through education?

for potential future investigation?